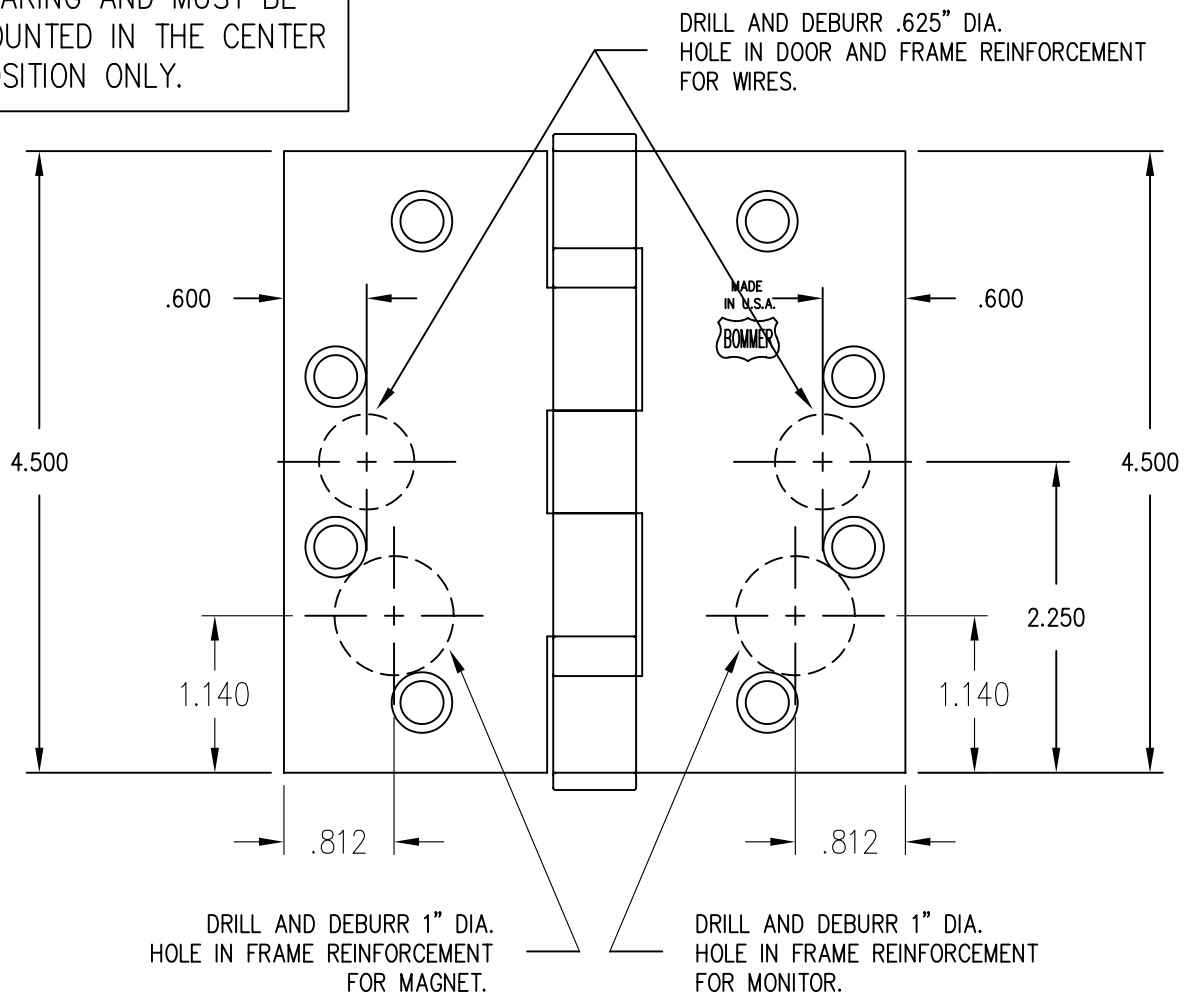


DOOR AND FRAME PREPARATION TEMPLATE

BB5000 SERIES CONCEALED ELECTRIC MONITOR AND THROUGH WIRE HINGES
4.5 INCH FULL MORTISE, 5-KNUCKLE, BALL BEARING, STANDARD AND HEAVY WEIGHT.

DRAWING NOT TO SCALE

HINGES ARE NON-LOAD
BEARING AND MUST BE
MOUNTED IN THE CENTER
POSITION ONLY.



NOTE:
FOR MOUNTING HOLE DIMENSIONS
REFER TO TEMPLATE NOS.
5000-450-T FOR STANDARD WEIGHT
BB5004-450-T FOR HEAVY WEIGHT

TEMPLATE NO. BB5060-450ETM-T