

# INSTRUCTIONS FOR APPLYING SPRING PIVOTS

NOTES:  
CAUTION DO NOT REMOVE TENSION PIN FROM ADJUSTABLE TYPE PIVOTS PRIOR TO INSTALLATION.  
IF TENSION PIN IS REMOVED, THIS COULD CAUSE FAILURE OF THE PIVOT TO CLOSE THE DOOR IN ONE OR BOTH DIRECTION, CALL BOMMER FOR INSTRUCTIONS TO REACTIVATE 7100 AND 7300 PIVOTS.

STEP ( 1 ):  
INSTALLATION OF TOP JAMB BRACKET  
  
LOCATE TOP JAMB BRACKET AT CORRECT HEIGHT AND SECURE TO JAMB.

STEP ( 2 ):  
DOOR PREPARATION  
  
PREPARE RADIUS ON DOOR EDGE.  
  
MORTISE "TOP PIVOT SOCKET" INTO TOP EDGE OF DOOR.  
  
\*FOR MORTISE TYPE PIVOT CUT OUT BOTTOM CORNER OF DOOR.  
  
DRILL HOLE IN BOTTOM OF DOOR FOR PROJECTING "BOSS" ON TOP OF PIVOT.

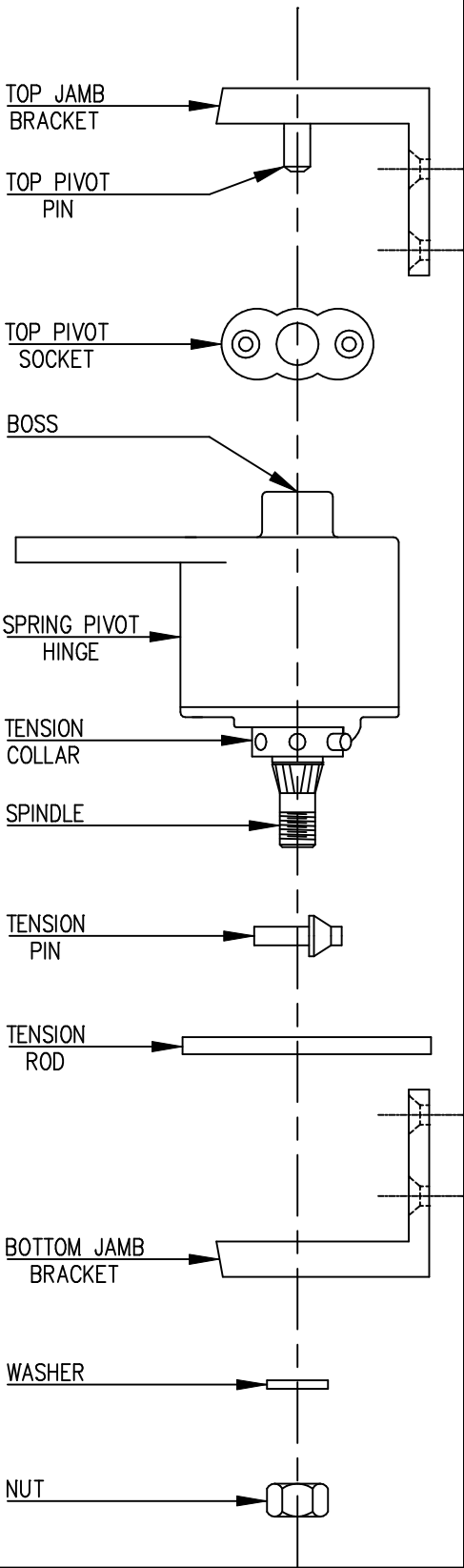
SECURE PIVOT TO DOOR WITH CENTER OF SPINDLE ALIGNED WITH CENTER OF HOLE IN "TOP PIVOT SOCKET".

STEP ( 3 ):  
INSTALLATION OF BOTTOM JAMB BRACKET  
  
ATTACH "BOTTOM JAMB BRACKET" TO PIVOT ON DOOR, ATTACH NUT ON HAND TIGHT ( DO NOT TIGHTEN WITH WRENCH ),  
  
LOCATE AND MARK CORRECT POSITION ON JAMB FOR "BOTTOM JAMB BRACKET" BY PLACING DOOR IN OPENING WITH "TOP PIVOT PIN" IN THE "TOP PIVOT SOCKET" AND TOP SURFACE OF DOOR HELD TIGHTLY AGAINST "TOP JAMB BRACKET".  
  
REMOVE DOOR FROM OPENING.  
  
REMOVE "BOTTOM JAMB BRACKET" FROM PIVOT.  
  
ATTACH "BOTTOM JAMB BRACKET" TO JAMB.

STEP ( 4 ):  
INSTALLATION OF DOOR  
  
REMOVE "TOP PIVOT PIN" FROM "TOP JAMB BRACKET" USING A SCREWDRIVER.  
  
PLACE DOOR IN OPENING INSERTING "SPINDLE" IN BOTTOM BRACKET.  
  
REPLACE "TOP PIVOT PIN" IN "TOP JAMB BRACKET" WITH "TOP PIVOT PIN" PROJECTING INTO "TOP PIVOT SOCKET" IN DOOR.  
  
WITH DOOR IN THE CLOSED POSITION PLACE "WASHER" AND "NUT" ON THE "SPINDLE" AND TIGHTEN SECURELY, THIS WILL DRAW SPLINE ON "SPINDLE" FIRMLY INTO "BOTTOM JAMB BRACKET" ( FAILURE TO TIGHTEN NUT SECURELY WILL ALLOW SPINDLE TO TURN IN BRACKET, RESULTING IN FAILURE OF PIVOT TO CLOSE DOOR CORRECTLY.

STEP ( 5 ):  
TENSION ADJUSTMENT  
( FOR ADJUSTABLE TYPE PIVOTS ONLY )  
  
TO CHANGE CLOSING POWER INSERT THE "TENSION ROD" INTO THE "TENSION COLLAR" TURN COUNTERCLOCKWISE ( AS VIEWED FROM THE BOTTOM ) AND REMOVE "TENSION PIN" ( DO NOT REMOVE "TENSION ROD" LEAVE IN PLACE ).  
  
REINSERT "TENSION PIN" IN "TENSION COLLAR" AT HOLE LOCATION REQUIRED TO OBTAIN DESIRED AMOUNT OF TENSION.

NOMENCLATURE  
SURFACE PIVOTS AND BRACKETS INSTRUCTIONS APPLY TO MORTISE PIVOTS, CLAMP BRACKETS, ETC.



BOMMER INDUSTRIES. INC. LANDRUM, S.C. 2003

INSTALLATION INSTRUCTIONS :  
INSTRUCTION FOR APPLYING SPRING PIVOT SERIES 7000, 7100, 7200, 7300

Drawn by : STEWART JACKSON	DATE 27 MAR 03	SCALE N.T.S.	DRAWING NUMBER 865641
----------------------------	-------------------	-----------------	--------------------------