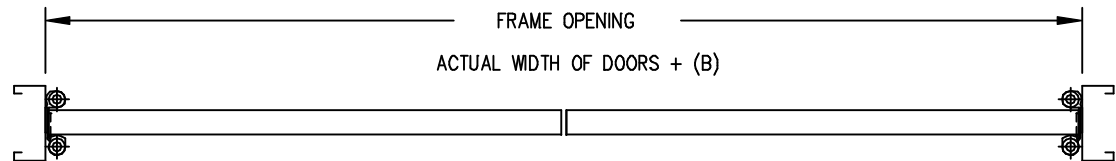
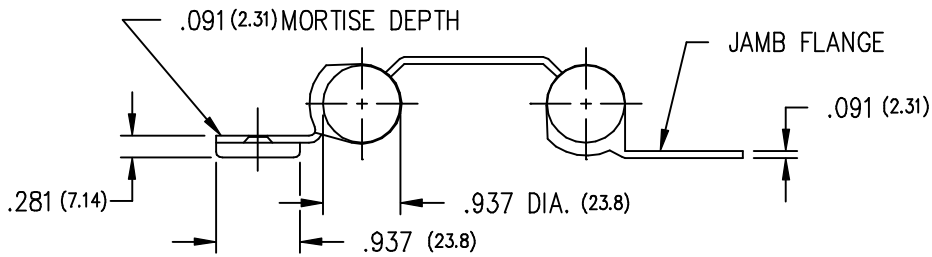


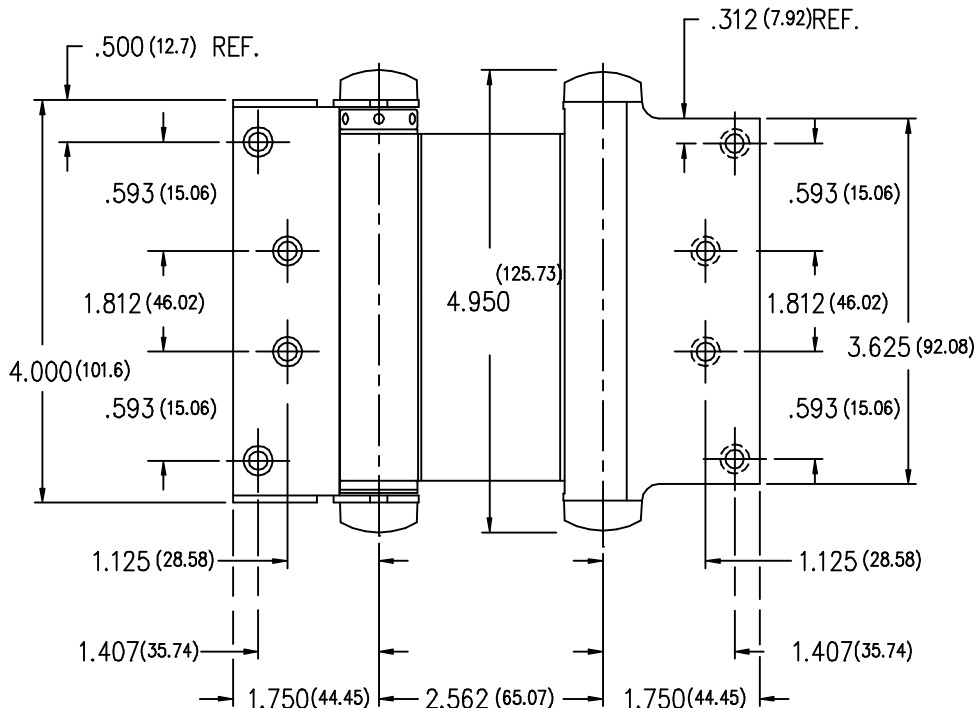
SINGLE DOOR



PAIR OF DOORS



THIS IS A CAD DRAWING...  
DO NOT REVISE MANUALLY.



VERIFY THAT DRAWING IS CURRENT PRIOR TO USING

FRAME SIZING INFORMATION

HINGE MOUNTING	(A)	(B)
DOOR FLANGE NOT MORTISED	.470	.940
DOOR FLANGE MORTISED	.379	.758

---NOTES---

- (1) DO NOT USE ON DOORS WITH HINGE EDGE BEVELED.
- (2) INVERT HINGES ON ONE DOOR OF A PAIR FOR PROPER CENTERING.
- (3) DIMENSIONS IN PARENTHESES ARE MILLIMETERS.
- (4) WOOD SCREW 8 X 3/4".

**Bommer**

BOMMER INDUSTRIES, INC.  
LANDRUM, SC 29356  
MADE IN THE USA

3029-4  
DOUBLE ACTING SPRING HINGE

DRAWN BY : STEWART JACKSON	DATE	SCALE	DRAWING NUMBER
APPROVED BY :	15 JUL 98	NONE	071598-3029-4T
PLOT DATE : 15 JUL 98			