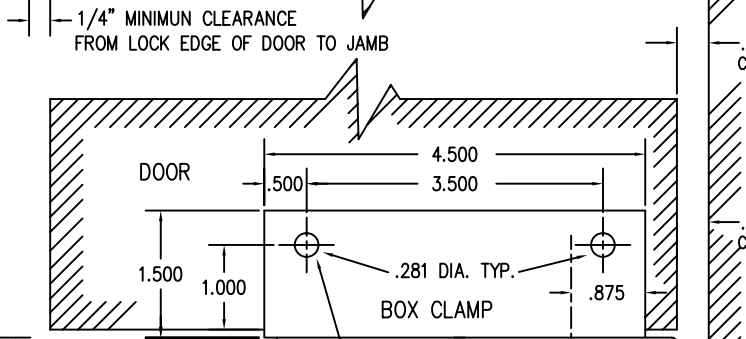
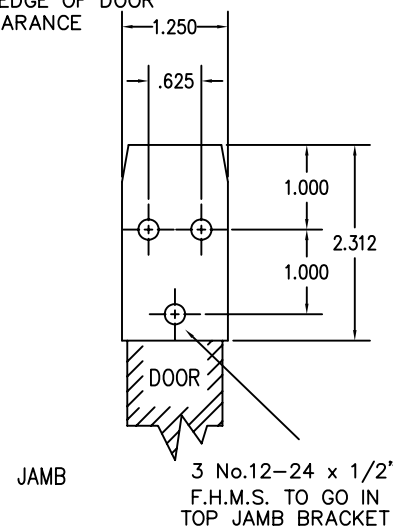
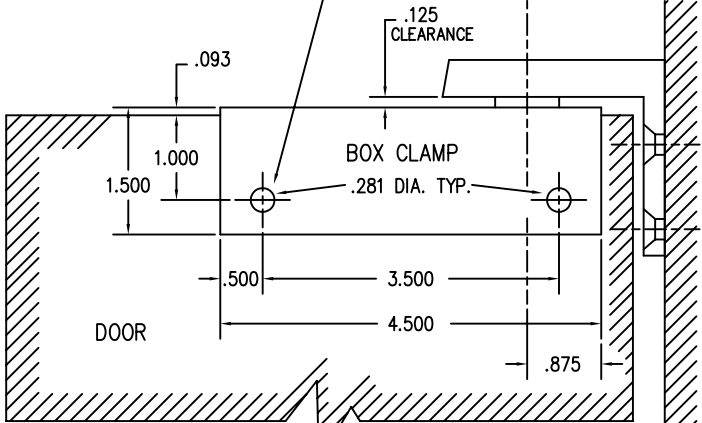
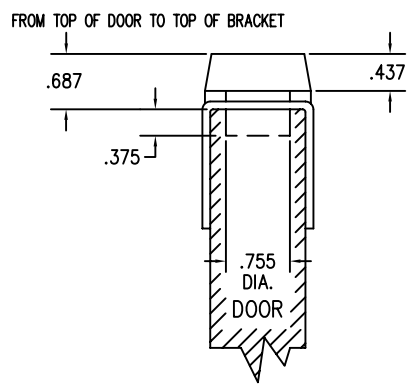
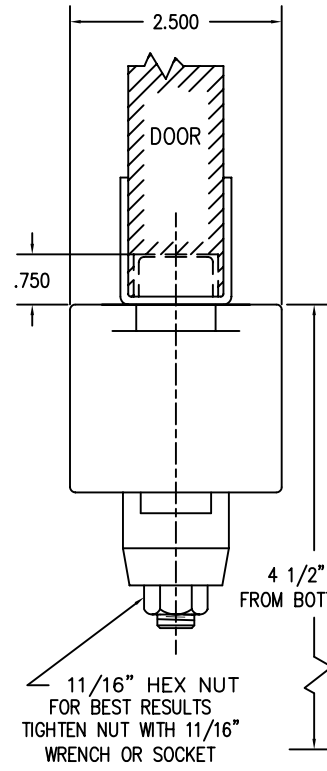


(2) 15109 THRU BOLTS FOR BOX CLAMP

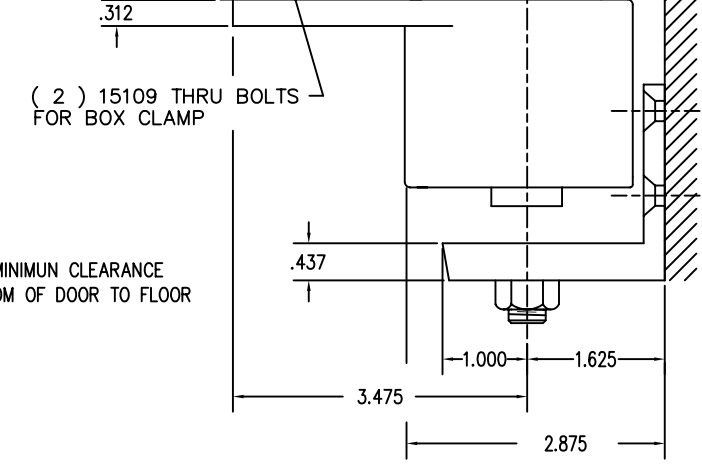


(2) 15109 THRU BOLTS FOR BOX CLAMP

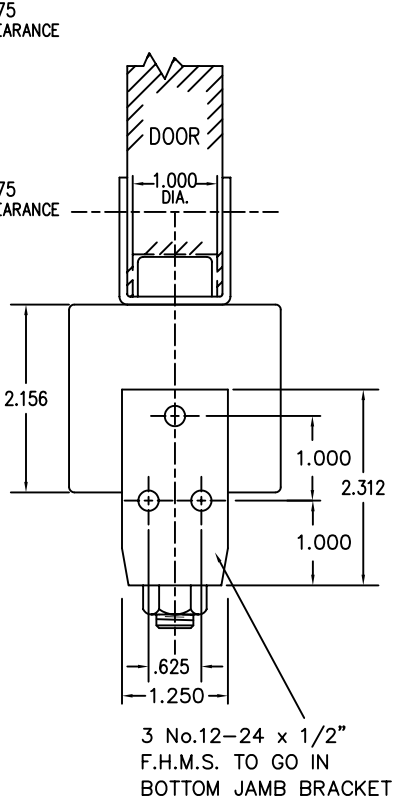


4 1/2" MINIMUM CLEARANCE FROM BOTTOM OF DOOR TO FLOOR

11/16" HEX NUT FOR BEST RESULTS TIGHTEN NUT WITH 11/16" WRENCH OR SOCKET



JAMB TO OUTSIDE EDGE OF PIVOT WHEN OPENING DOOR TO 90 °



SCREWS		-----NOTE-----		BOMMER IND. INC. LANDRUM, S.C.			
DOOR BOX CLAMPS	15109 THRU BOLTS (4)	DOOR THICKNESS	1 1/8"	TYPE : LAVATORY AND GATE SPRING PIVOT DOUBLE ACTING			
No. 12-24 x 1/2" F.H.M.S. (6)		*PIVOT EDGE OF DOOR WILL HAVE TO BE ROUNDED TO 1 5/16" RADIUS FROM THE PIVOT CENTER LINE TO CLEAR TOP PIVOT BRACKET		PART NO.: 7014	Drawn by : JACKSON	DATE	SCALE
				Approved by :	05 MAR 07	N.T.S.	DRAWING NUMBER
							7014TEMP

THIS IS A CAD DRAWING... DO NOT REVISE MANUALLY.